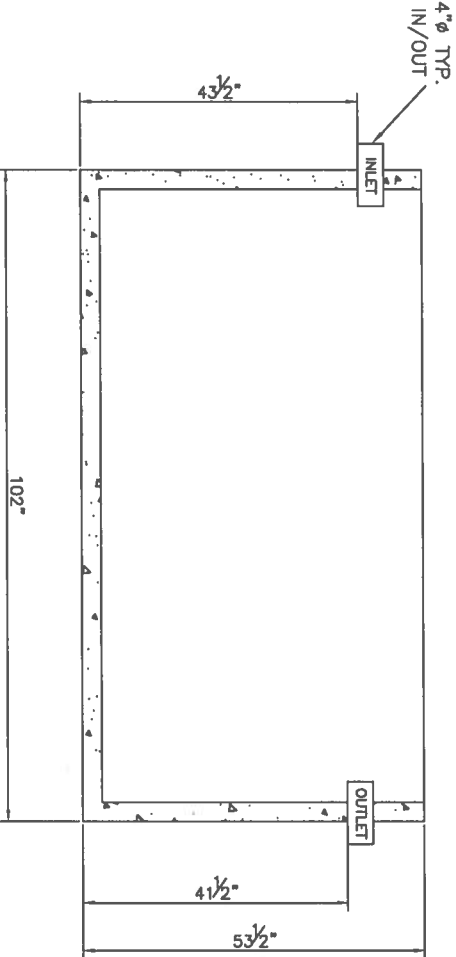
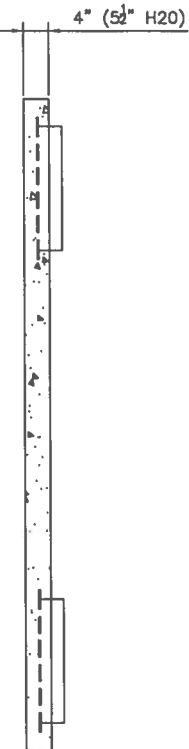
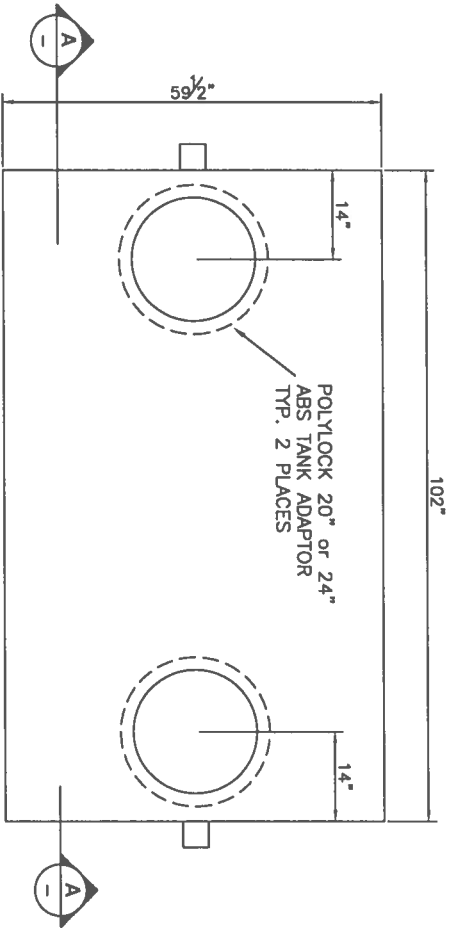


6000 IMP GAL HOLDING TANK CISTERN



SECTION A
NTS

DETAILS:

1. CONCRETE 30MPa @ 28 DAYS
2. 4 x 4 x 10/10 WELDED WIRE MESH IN BOTTOM & SIDES
3. 10M REBAR MAT IN COVER
4. CONCRETE CONTAINS PROPEX FIBERMESH 150 MULTIFILAMENT FIBRES
5. MAXIMUM BURIAL DEPTH - 6 FEET
6. 20" PLASTIC POLYLOK RISER IN SEPTIC TANKS/ 24" PLASTIC POLYLOK RISER IN PUMP CHAMBERS
7. LID SEALED TO TANK WITH 3/4" CONSEAL CS-101 GASKET
8. H2O TRAFFIC RATED TANKS ARE AVAILABLE, CONTACT YOUR NANAIMO PRECAST LIMITED REP. FOR MORE DETAILS

TOTAL TANK VOLUME - 713 Imp Gal
(CALCULATED TO OUTLET INVERT)
TANK WEIGHT - 5,992 lbs
LID WEIGHT - 2,228 lbs

TANK IS DESIGNED TO BE FULLY BACKFILLED PRIOR TO ANY FILLING OR USE
NANAIMO PRECAST ACCEPTS NO RESPONSIBILITY FOR SITE CONDITIONS
OR FOR OVERALL SYSTEM DESIGN, A R.O.W.P. SHOULD BE RETAINED



1941 TRANS CANADA HIGHWAY
NANAIMO B.C.
PH 250-591-6115 FAX 250-591-6114
www.nanaimoprecast.ca

6000 IMPERIAL GALLON (2,728 LITER)
HOLDING TANK / CISTERN

DATE: JANUARY 5, 2017

DRAWN BY: S TAYLOR

TANK MODEL: 600-3