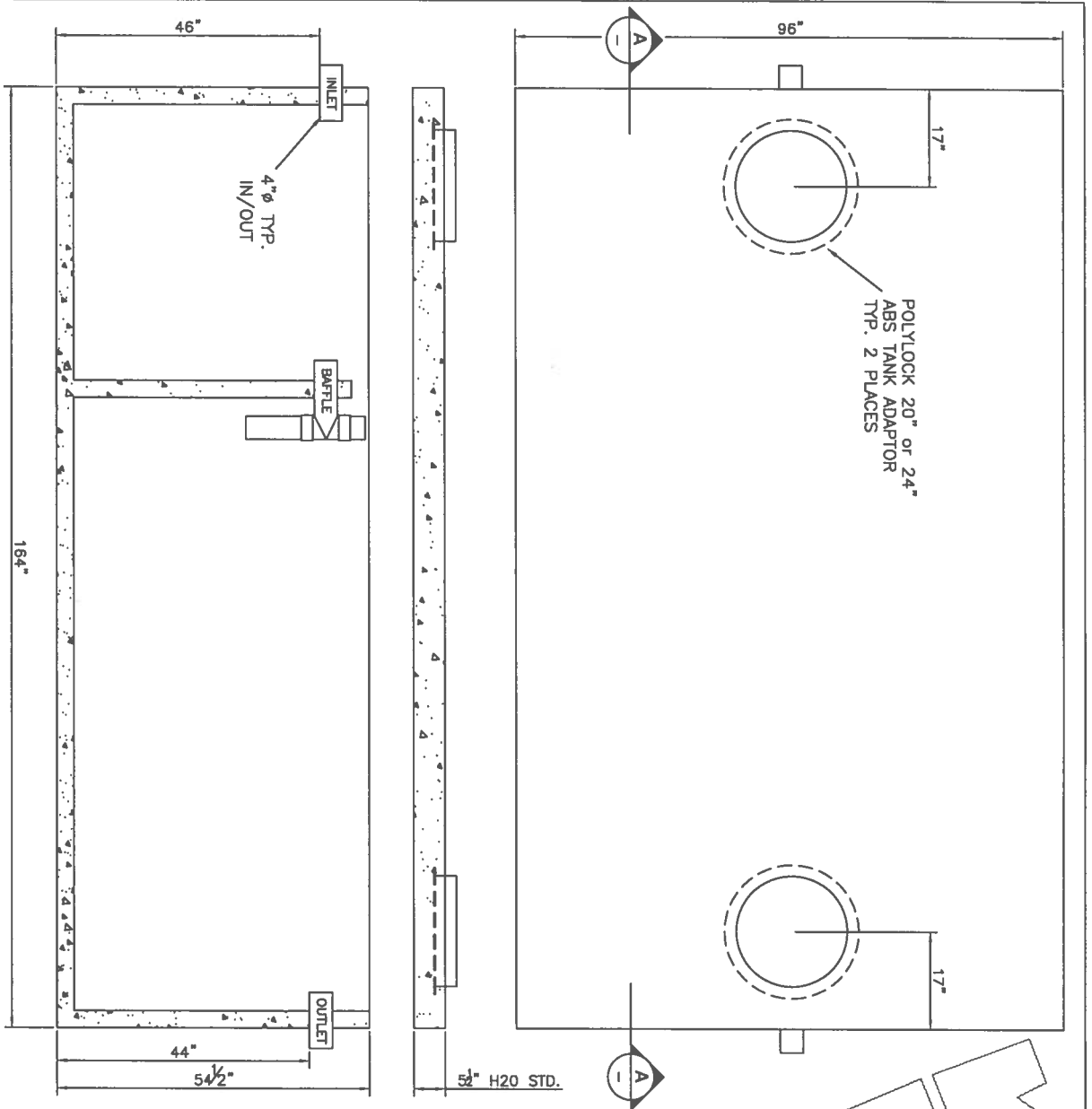


# 20000 IMP GAL SEPTIC TANK



- DETAILS:**
1. CONCRETE 30MPa @ 28 DAYS
  2. 4 x 4 x 10/10 WELDED WIRE MESH IN BOTTOM & SIDES
  3. 10M REBAR MAT IN COVER
  4. CONCRETE CONTAINS PROPEX FIBERMESH 150 MULTIFILAMENT FIBRES
  5. MAXIMUM BURIAL DEPTH - 6 FEET
  6. 20" PLASTIC POLYLOK RISER IN SEPTIC TANKS/ 24" PLASTIC POLYLOK RISER IN PUMP CHAMBERS
  7. LID SEALED TO TANK WITH 3/4" CONSEAL CS-101 GASKET
  8. H2O TRAFFIC RATED TANKS ARE AVAILABLE, CONTACT YOUR NANAIMO PRECAST LIMITED REP. FOR MORE DETAILS

TOTAL TANK VOLUME - 2,055 ImpGal  
(CALCULATED TO OUTLET INVERT)  
TANK WEIGHT - 14,546 lbs  
LID WEIGHT - 7,946 lbs

SECTION A-A  
NTS

TANK IS DESIGNED TO BE FULLY BACKFILLED PRIOR TO ANY FILLING OR USE  
NANAIMO PRECAST ACCEPTS NO RESPONSIBILITY FOR SITE CONDITIONS  
OR FOR OVERALL SYSTEM DESIGN, A R.O.W.P. SHOULD BE RETAINED



1941 TRANS CANADA HIGHWAY  
NANAIMO B.C.  
PH 250-591-6115 FAX 250-591-6114  
WWW.NANAIMOPRECAST.CA

2000 IMPERIAL GALLON (9,092 LITER)  
SEPTIC TANK

DATE: JANUARY 5, 2017 DRAWN BY: S. TAYLOR TANK MODEL: 2000-3