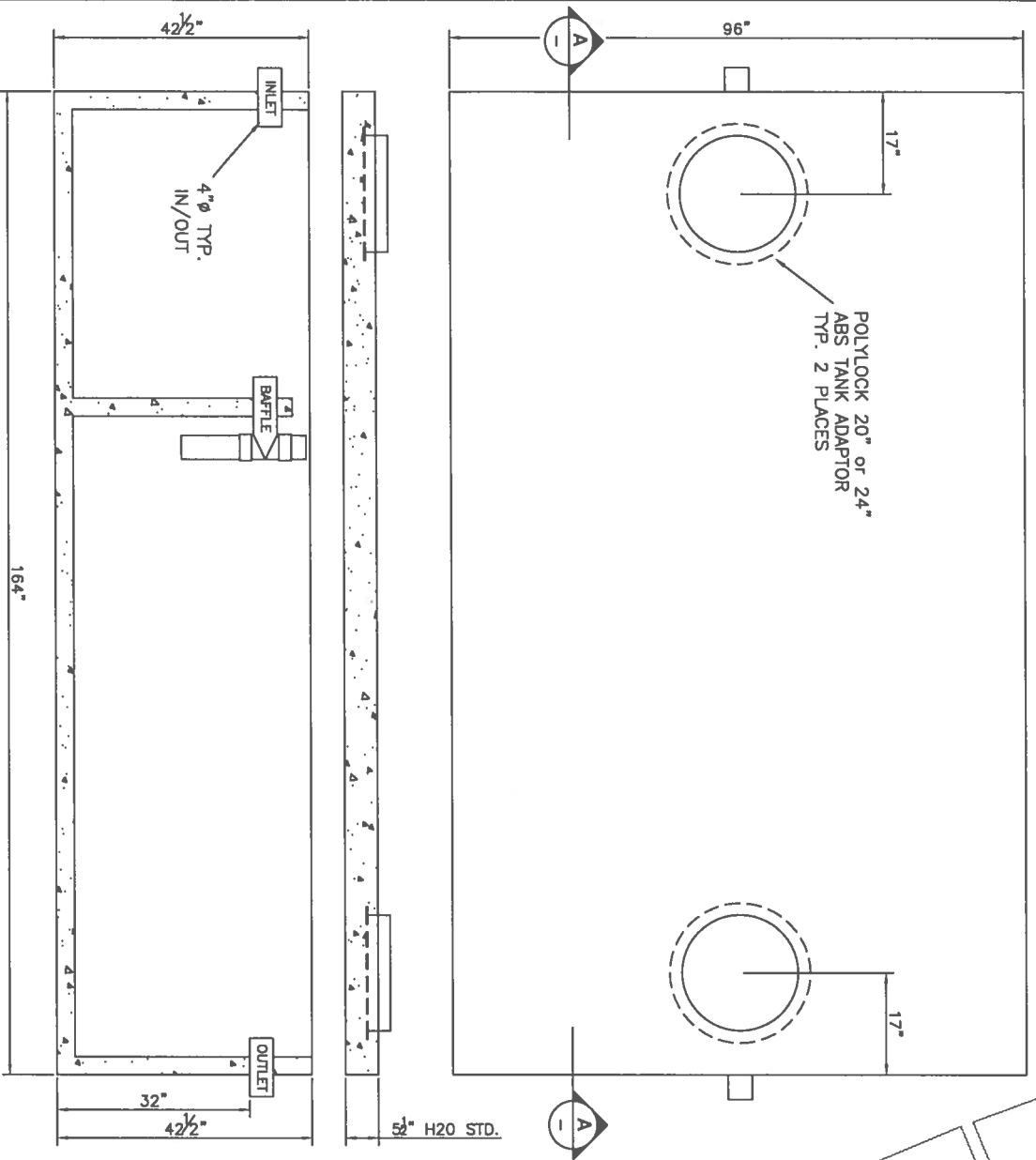


15000 IMP GAL

LOW PROFILE SEPTIC TANK



- DETAILS:
1. CONCRETE 30MPa @ 28 DAYS
 2. 4 x 4 x 10/10 WELDED WIRE MESH IN BOTTOM & SIDES
 3. 10M REBAR MAT IN COVER
 4. CONCRETE CONTAINS PROPEX FIBERMESH 150 MULTIFILAMENT FIBRES
 5. MAXIMUM BURIAL DEPTH - 6 FEET
 6. 20" PLASTIC POLYLOK RISER IN SEPTIC TANKS/ 24" PLASTIC POLYLOK RISER IN PUMP CHAMBERS
 7. LID SEALED TO TANK WITH $\frac{3}{4}$ " CONSEAL CS-101 GASKET
 8. H2O TRAFFIC RATED TANKS ARE AVAILABLE, CONTACT YOUR NANAIMO PRECAST LIMITED REP. FOR MORE DETAILS

TOTAL TANK VOLUME - 1,503 ImpGal
 (CALCULATED TO OUTLET INVERT)
 TANK WEIGHT - 12,300 lbs
 LID WEIGHT - 7,946 lbs

SECTION A
 NTS

TANK IS DESIGNED TO BE FULLY BACKFILLED PRIOR TO ANY FILLING OR USE
 NANAIMO PRECAST ACCEPTS NO RESPONSIBILITY FOR SITE CONDITIONS
 OR FOR OVERALL SYSTEM DESIGN, A R.O.W.P. SHOULD BE RETAINED

NANAIMO PRECAST LTD
 1941 TRANS CANADA HIGHWAY
 NANAIMO B.C.
 PH 250-591-6115 FAX 250-591-6114
 www.nanaimoprecast.ca

15000 IMPERIAL GALLON (6,819 LITER)
 LOW PROFILE SEPTIC TANK
 DATE: JANUARY 5, 2017
 DRAWN BY: S. TAYLOR
 TANK MODEL: 1500L-1